



**VTOOLS**  
Signage Starts with the Right Tools

*Manufacturer of CNC Routers  
Channel Letter Binder*

*Your one-stop solution*

## CNC Router



### **CNC Router – Model VJ1325 Shop Pro**

Designed for cutting and machining materials commonly used in signage manufacturing such as:

- Acrylic
- PVC / Sintra
- Aluminum Composite Panel (ACM)
- Wood and MDF

#### **Main Specifications:**

- Working Area: 1300 x 2500 mm
- Spindle: 6 horsepower (Water cooled) Chiller included
- Controller: Weihong Nk105
- Press rollers for holding material during processing.
- Drive System: X/Y Rack and pinion, Z Ball screw - Operated by closed loop servomotors
- Software Included: CAM software license (V-Carve Pro)
- Power Requirement: 220V / 2 Ph / 5Kw for CNC machine 220V / 3ph / 6.5Kw for vacuum pump
- CAM Software: V-Carve Pro (Computer not included)

# Co<sub>2</sub> Laser Cutting Machine



## Co<sup>2</sup> Laser Cutting Machine – Model VJ1309

Ideal for precision cutting and engraving of non-metallic materials such as:

- Acrylic
- Wood
- Leather
- Fabrics
- Plastics

Main Specifications:

- Work Area: 1300 x 900 mm
- Laser Power: 130w
- Cooling System: Water cooling system included
- CAM Software: RD Works
- Control Software: Included
- Power Requirement: 220V / 2Ph / 3Kw

# Channel Letter Bending Machine



## **Brief Instruction:**

The VJTOOLS-VJ6730 is a desktop, fully automatic mini channel letter bending machine, equipped with notching and flanging capabilities for processing aluminum coil. It features closed-loop control, roller flattening, servo feeding, and ensures consistent grooving depth. The machine employs mold-based notching, pneumatic flanging, and a fixed dual-bending-stick mechanism. Characterized by precise feeding, neatly aligned notches, and excellent bend formation, it is a specialized piece of equipment for producing aluminum channel letters.

\* The machine base is optional (sold separately).

# Pneumatic Stapler Machine

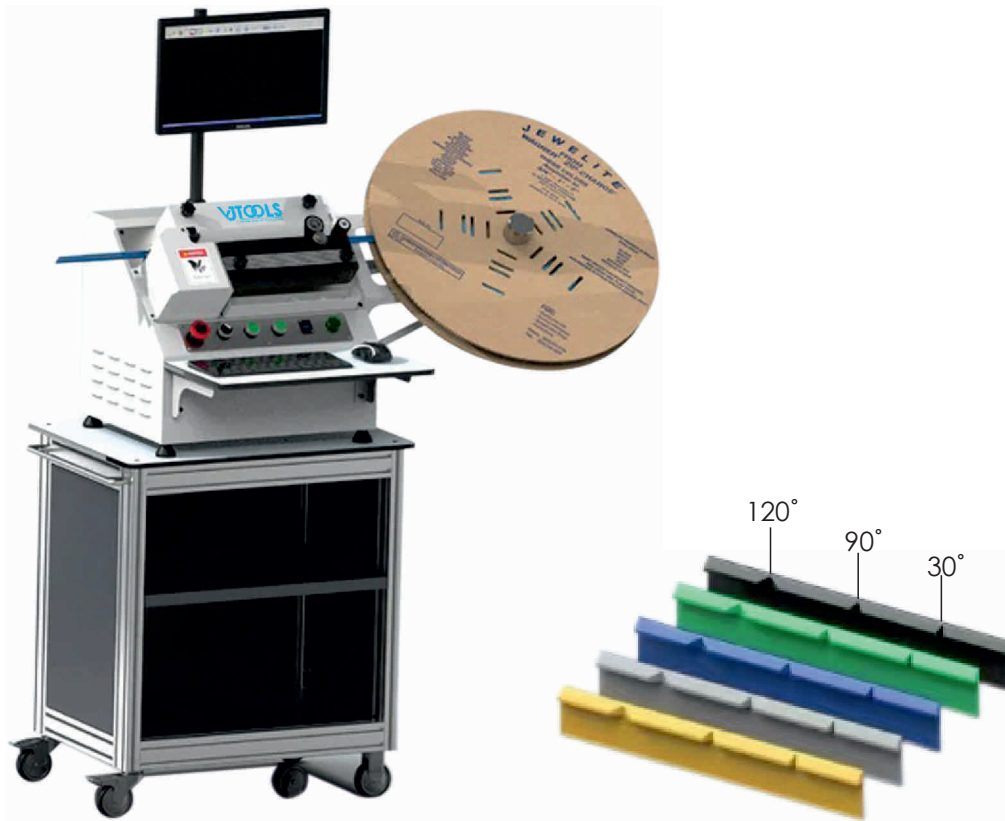


## **VJTOOLS-Pneumatic Stapler Machine: Engineered for High-Performance Stapling**

Streamline your stapling process with the TPS Pneumatic Stapler Machine—the epitome of power and efficiency in fast-paced environments. Driven by compressed air for maximum force and reliability, this machine swiftly secures staples into a range of materials. Designed for the demanding needs of industrial packaging, upholstery, and construction, it delivers consistent precision even during extensive use. Embrace the simplicity of operation and the rugged build of the TPS Pneumatic Stapler Machine, tailor-made to enhance productivity and ease the workload in intensive stapling applications.

# Trimcap Notcher

**Compact and Efficient**  
It's a great helper in reducing labor demands.



## Technical Parameters

Power supply:	AC220V 50-60Hz	Material thickness:	1.5mm
Power:	0.8kw	Material feeding method	Roller pressing feed
Compressed air:	0.6-0.8MPa	Servo Motor:	1pc
Notching angles:	<60°, <90°, <120°	N.W./G.W.:	45kgs / 80kgs
Material width:	26-50mm	Dimension:	1100(L)x650(W)x800(H)mm

## LED Modules

# House of LED Modules

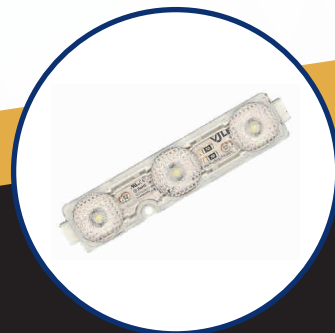
Your Sign Deserves More Than Light !  
They Deserve VJ LED Impact



Nova Blaze Series



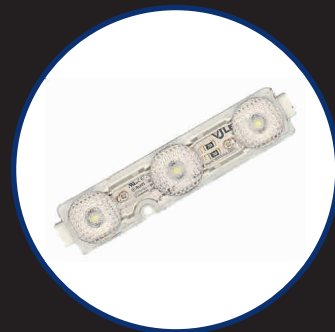
Nova Spark Series



Nova Glow Series



Nibula Series



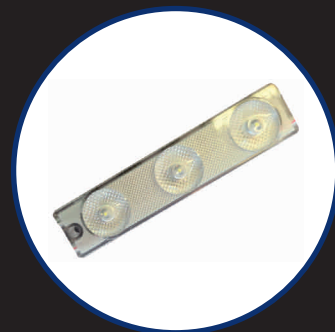
Eclipse Series



Novabrightwave Series



Novashine Series



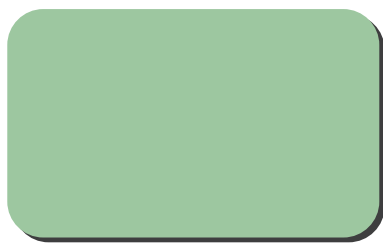
Novalightway Series



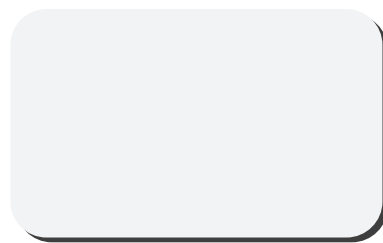
# ACP Sheets



Glossy Yellow



Glossy Bloom White



Glossy White



Glossy Lemon Yellow



Glossy Vivid Green



Glossy Milk



Glossy Orange



Glossy Green



Glossy Light Grey



Glossy Red



Glossy Light Blue



Glossy Bank Grey



Glossy Wine Red



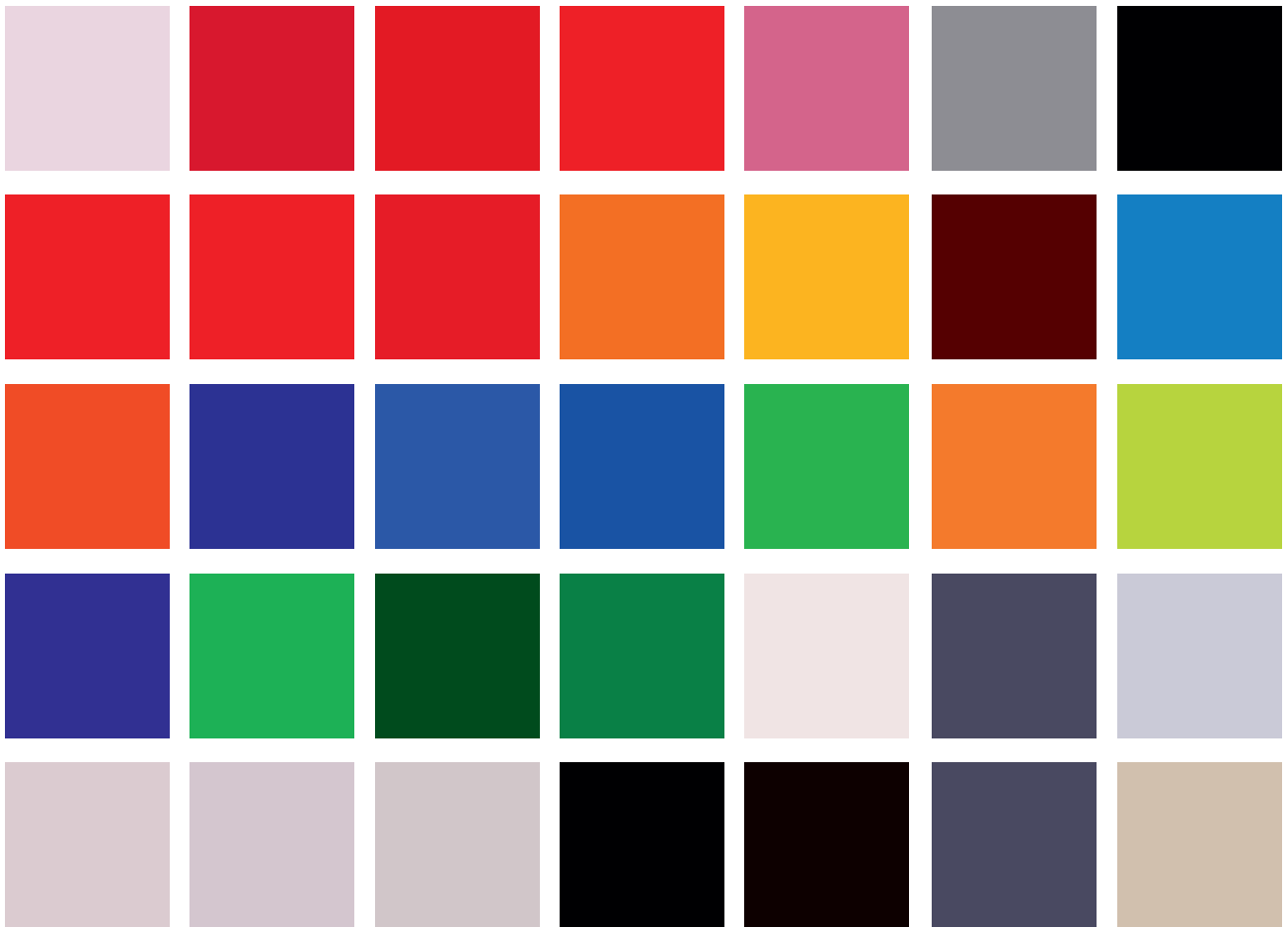
Glossy Blue



Glossy Black

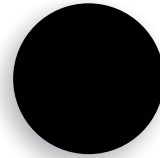


# 100% CAST ACRYLIC SHEET

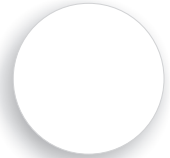


# ALUACOIL

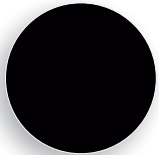
## Channel Letter Coils



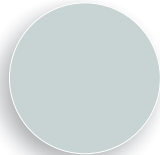
Gloss Black



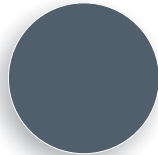
Gloss White



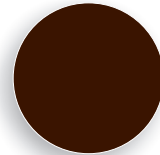
Matte Black



Light Gray



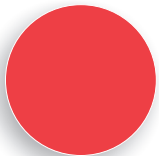
Dark Gray



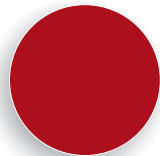
Bronze



Brown



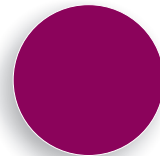
Brite Red



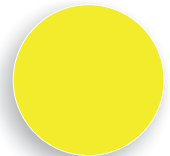
Hunter Red



Hot Pink



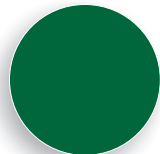
Burgundy



Yellow



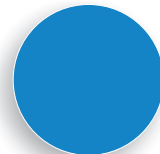
Brite Orange



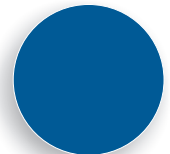
Ivy Green



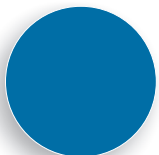
Lucky Green



Pepsi Blue



Chevron Blue



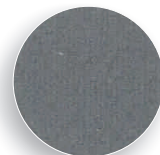
Heron Blue



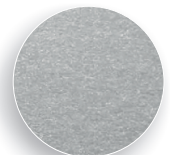
Ivory



White Frost



Brite Silver Metallic



Mill Finish



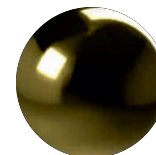
Brite Brushed  
Clear



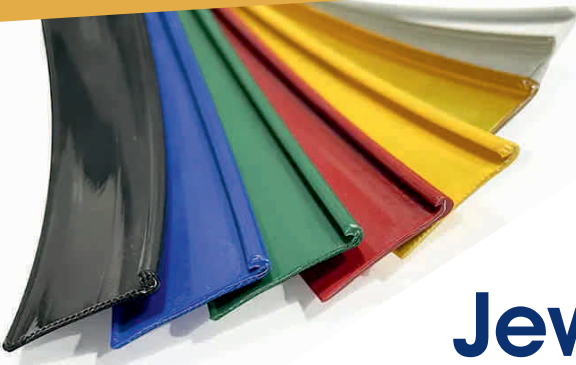
Clear Satin



Brite Clear



Brite Gold



# Jewelite Trim Cap Built for Signs That Endure



## JEWELIGHT



# VJTOOLS

Signage Starts with the Right Tools

**Cell: 848-316-8660**

✉ [info@vj-tools.com](mailto:info@vj-tools.com)

🌐 [www.vjtools.us](http://www.vjtools.us)

